

## Connection system

## Zehnder ComfoPipe

### Benefits

- Simple installation thanks to self-supporting, light components
- Tight-fitting, robust connections
- Great thermal insulation do to expanded polypropylene (EPP)
- Closed-cell and vapour-tight surface
- Fits on to ComfoAir Unit 160/200/350/550 connections.

### Article numbers

Product	Art. no.	Reference No.
ComfoPipe duct length: 39", $\varnothing$ = 6.1"/5.0" (155/125)	990 328 672	9415
ComfoPipe duct length: 39", $\varnothing$ = 7.0"/6.0" (180/150)	990 328 641	9290
ComfoPipe duct length: 39", $\varnothing$ = 8.3"/7.0" (210/180)	990 328 651	9291
ComfoPipe bend 90°, $\varnothing$ = 6.1"/5.0" (155/125)	990 328 673	9416
ComfoPipe bend 90°, $\varnothing$ = 7.0"/6.0" (180/150)	990 328 643	9294
ComfoPipe bend 90°, $\varnothing$ = 8.3"/7.0" (210/180)	990 328 653	9295
ComfoPipe sleeve = 5.0" (125)	990 328 675	9418
ComfoPipe sleeve = 6.0" (150)	990 328 644	9296
ComfoPipe sleeve = 7.0" (180)	990 328 654	9297
ComfoPipe junction 1, $\varnothing$ = 7.0"/6.0" (180/150)	990 328 662	9298



### Description

#### **ComfoPipe system: Insulated, vapour-tight, made of EPP plastic, lightweight.**

Insulated ComfoPipe ventilation tube. The pipe system comprises tubes of 39" (1000) length, 90° bends and sleeves. The tubes can be shortened to fit. 90° bends can be cut to 45° bends on cut line. Fast and simple installation, low weight, good thermal insulation.

**Connection system**

**Zehnder ComfoPipe**

**Dimensions**

Tube

D1	D2	D3	L
5.0" (125)	6.1" (155)	7.3" (185)	39" (1000)
6.0" (150)	7.0" (180)	8.3" (210)	39" (1000)
7.0" (180)	8.3" (210)	9.4" (240)	39" (1000)

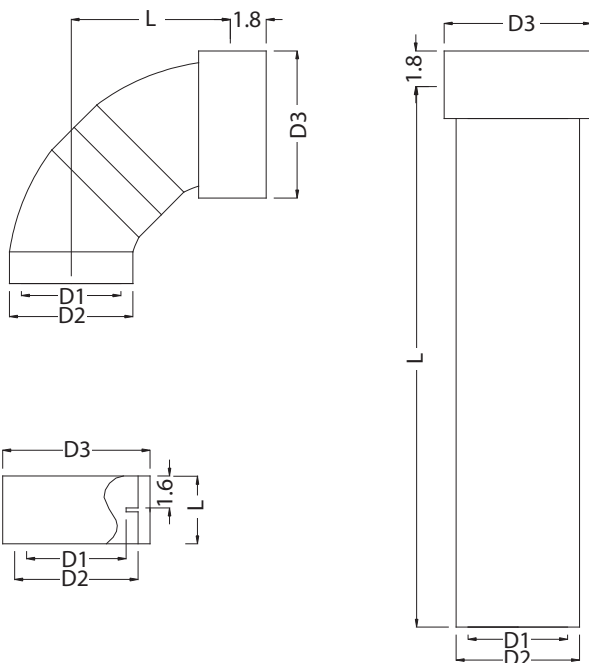
**90° bend**

5.0" (125)	6.1" (155)	7.3" (185)	7.9"
6.0" (150)	7.0" (180)	8.3" (210)	7.9"
7.0" (180)	8.3" (210)	9.4" (240)	8.5"

**Sleeve**

5.0" (125)	6.1" (155)	7.3" (185)	3.4"
6.0" (150)	7.0" (180)	8.3" (210)	3.4"
7.0" (180)	8.3" (210)	9.4" (240)	3.4"

**Dimensional drawing**



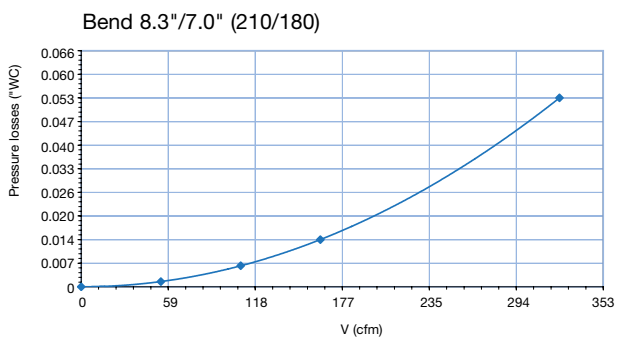
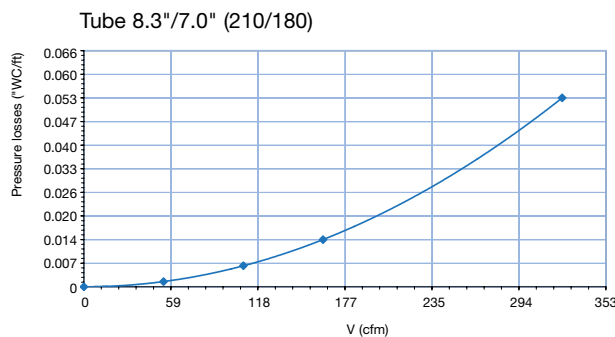
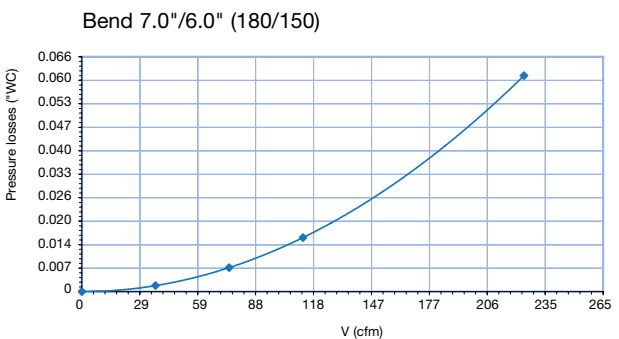
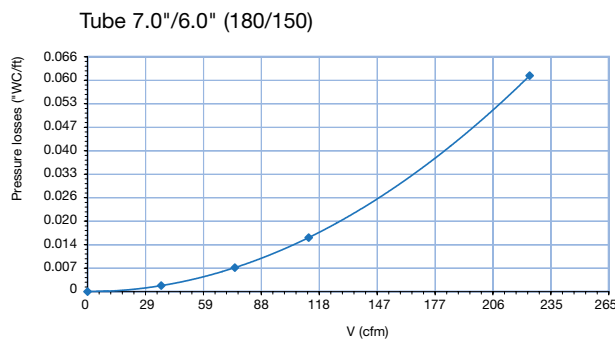
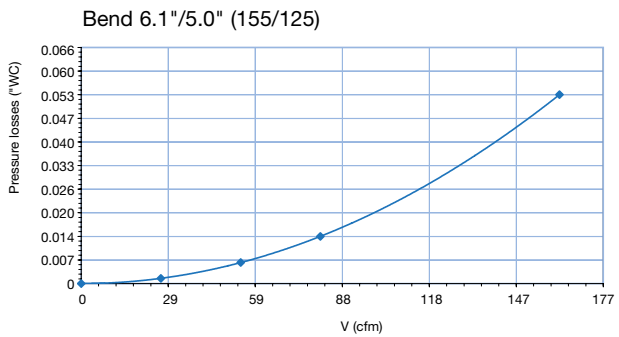
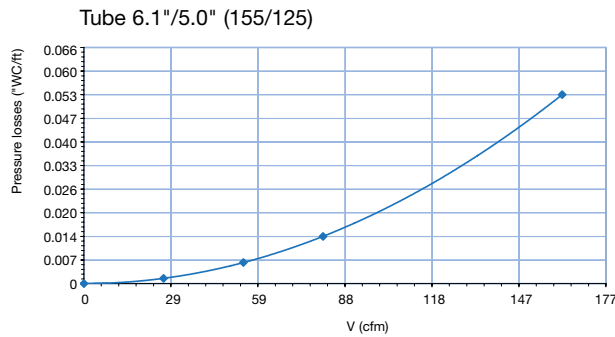
Connection system

Zehnder ComfoPipe

Specifications

Specifications	Material	EPP plastic
Dimensions	Material thickness:	0.60"
	Thermal conductivity:	0.0037 W/mK
	Applications:	-13°F to +140°F
	Elasticity:	30%

Pressure losses



ZA-CSY-FLYERTS078, V11 2014, en\_us, subject to changes