

Connection system

Zehnder ComfoPipe

Benefits

- Simple installation thanks to self-supporting, light components
- Close-fitting, pluggable, robust connections
- Good thermal insulation thanks to foamed polypropylene (PP)
- Closed-cell and vapour-tight surface
- Fits on ComfoAir 160/200/350/550 ventilation Device Connections

Article numbers

Product	Art. no.	Reference No.
ComfoPipe duct length: 20", $\varnothing = 6.1"/5.0"$ (155/125)	990 328 671	9414
ComfoPipe duct length: 20", $\varnothing = 7.0"/6.0"$ (180/150)	990 328 640	9288
ComfoPipe duct length: 20", $\varnothing = 8.3"/7.0"$ (210/180)	990 328 650	9289
ComfoPipe duct length: 39", $\varnothing = 6.1"/5.0"$ (155/125)	990 328 672	9415
ComfoPipe duct length: 39", $\varnothing = 7.0"/6.0"$ (180/150)	990 328 641	9290
ComfoPipe duct length: 39", $\varnothing = 8.3"/7.0"$ (210/180)	990 328 651	9291
ComfoPipe bend 45° $\varnothing = 6.1"/5.0"$ (155/125)	990 328 674	9417
ComfoPipe bend 45° $\varnothing = 7.0"/6.0"$ (180/150)	990 328 624	9292
ComfoPipe bend 45° $\varnothing = 8.3"/7.0"$ (210/180)	990 328 682	9293
ComfoPipe bend 90° $\varnothing = 6.1"/5.0"$ (155/125)	990 328 673	9416
ComfoPipe bend 90° $\varnothing = 7.0"/6.0"$ (180/150)	990 328 643	9294
ComfoPipe bend 90° $\varnothing = 8.3"/7.0"$ (210/180)	990 328 653	9295
ComfoPipe sleeve $\varnothing = 5.0"$ (125)	990 328 675	9418
ComfoPipe sleeve $\varnothing = 6.0"$ (150)	990 328 644	9296
ComfoPipe sleeve $\varnothing = 7.0"$ (180)	990 328 654	9297
ComfoPipe junction 1, $\varnothing = 7.0"/6.0"$ (180/150)	990 328 662	9298

Description

ComfoPipe system: Insulated, vapour-tight, made of PP plastic, lightweight.

Insulated ComfoPipe ventilation tube. The pipe system comprises tubes of 20" (500) and 39" (1000) length, 45° and 90° bends, sleeves and junctions. All elements are pluggable, the tubes can be shortened to fit. Fast and simple installation, low weight, good thermal insulation.



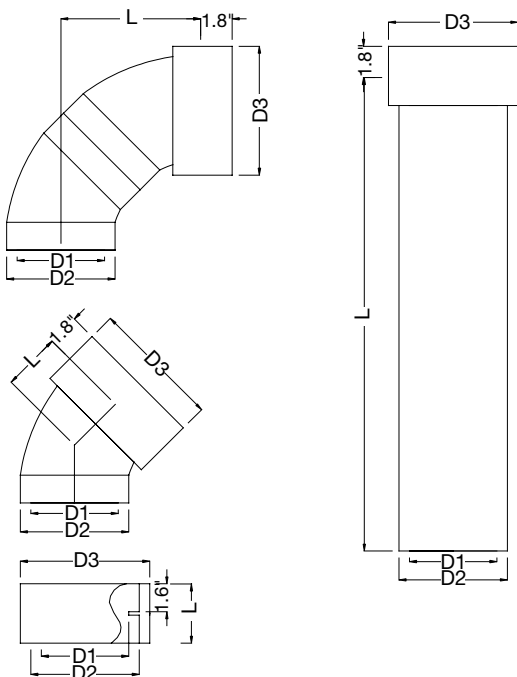
Connection system

Zehnder ComfoPipe

Dimensions

Duct		
D1	D2	L
5.0" (125)	6.1" (155)	20" (500)
5.0" (125)	6.1" (155)	39" (1000)
6.0" (150)	7.0" (180)	20" (500)
6.0" (150)	7.0" (180)	39" (1000)
7.0" (180)	8.3" (210)	20" (500)
7.0" (180)	8.3" (210)	39" (1000)
90° bend		
5.0" (125)	6.1" (155)	7.9"
6.0" (150)	7.0" (180)	7.9"
7.0" (180)	8.3" (210)	8.5"
45° bend		
5.0" (125)	6.1" (155)	3.3"
6.0" (150)	7.0" (180)	3.3"
7.0" (180)	8.3" (210)	3.5"
Sleeve		
5.0" (125)	6.1" (155)	3.4"
6.0" (150)	7.0" (180)	3.4"
7.0" (180)	8.3" (210)	3.4"

Dimensional drawing



Connection system

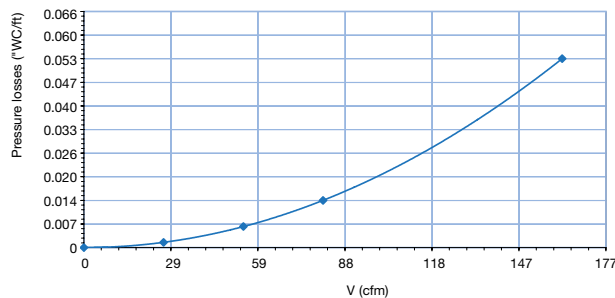
Zehnder ComfoPipe

Specifications

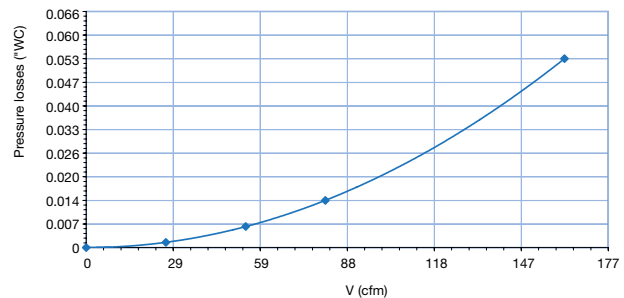
Specifications	Material	PP plastic
Dimensions	Material thickness:	0.60"
	Thermal conductivity:	0.037 W/mK
	Applications:	-13°F to 140°F
	Elasticity:	30%
	Weight:	0.36 lb/ft
		(45° bend 0.2lb)
		(90° bend 0.3 lb)

Pressure losses

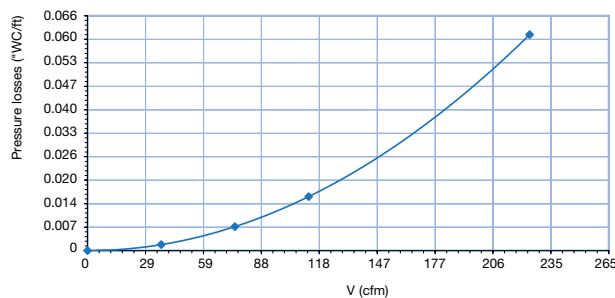
Tube 6.1"/5.0" (155/125)



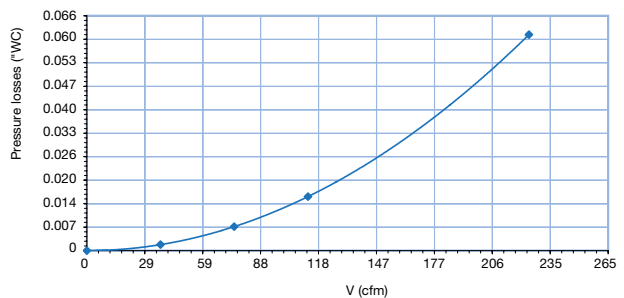
Bend 6.1"/5.0" (155/125)



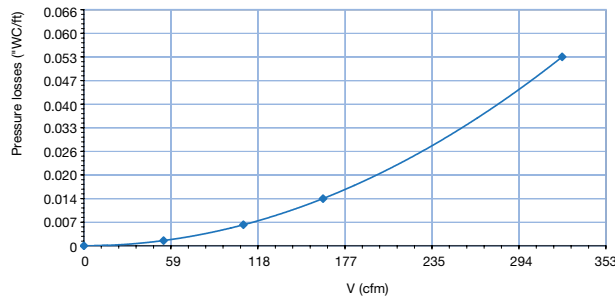
Tube 7.0"/6.0" (180/150)



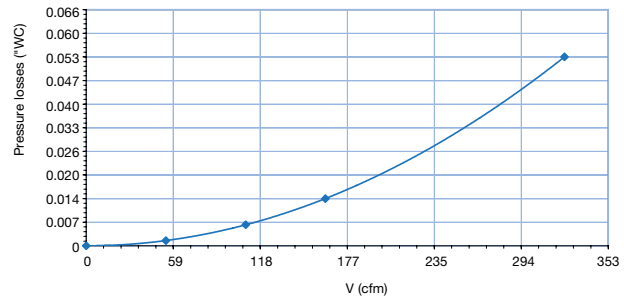
Bend 7.0"/6.0" (180/150)



Tube 8.3"/7.0" (210/180)



Bend 8.3"/7.0" (210/180)



ZA-CSY-FLYERTS078, V1211, en_us, subject to changes